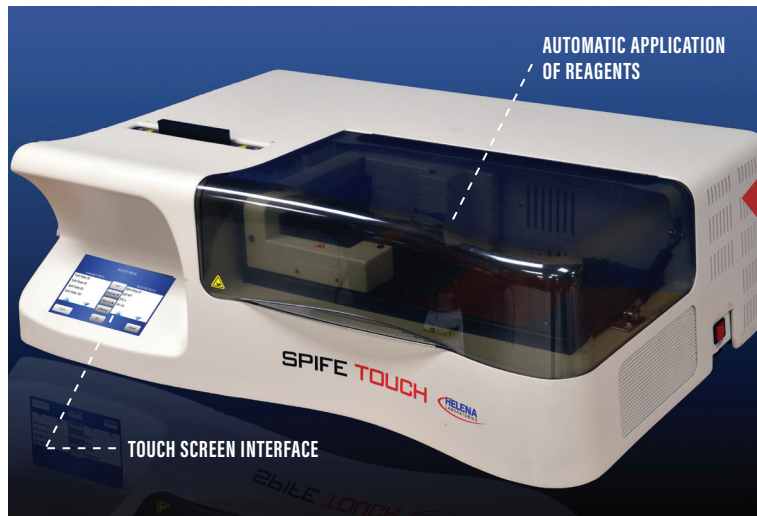


SPIFE Touch is the proven, workhorse solution for clinical gel electrophoresis needs. It's versatile and reliable with multiple gel sizes for flexibility. A full menu of analytes includes proteins, IFEs, hemoglobins, direct cholesterol with Lp(a)-c, isoenzymes, lipoproteins, A1AT and oligoclonal banding. A touch screen interface, faster processing and organized workflow means greater efficiency and throughput.



WORKHORSE SOLUTION FOR CLINICAL GEL ELECTROPHORESIS

SPIFE TOUCH ► Highlighted Features

- Easy-to-use touch screen interface
- Integrates with ESH Touch and QST-Plus for positive sample tracking
- Fast, clean and accurate sampling of up to 100 samples per gel
- Peltier temperature control for sample integrity and crisp separations
- Automatic application of reagents for enzymatic assays or stains for visible analytes
- A full menu of analytes and gel sizes

NEW

SPIFE AIAT

Alpha-1 Antitrypsin deficiency is the most common genetic risk factor for COPD and causes liver disease

Get Tested:

- Family history of AIAT
- Multiple family members with shortness of breath, cough
- Early onset emphysema



Misdiagnosis is common; the average AIAT patient has seen 3 doctors over 7 years since first lung symptoms

Get Tested:

- Asthma unresponsive to treatment
- Everyone with COPD
- Unexplained liver disease

■ Early diagnosis is essential! Lung damage is not reversible. Treatment can slow progression.

■ 360,000 with COPD have AIAT deficiency

■ In USA, 16 million with COPD; millions more undiagnosed*

*NIH National Heart, Lung and Blood Institute

JUMP TO DIGITAL



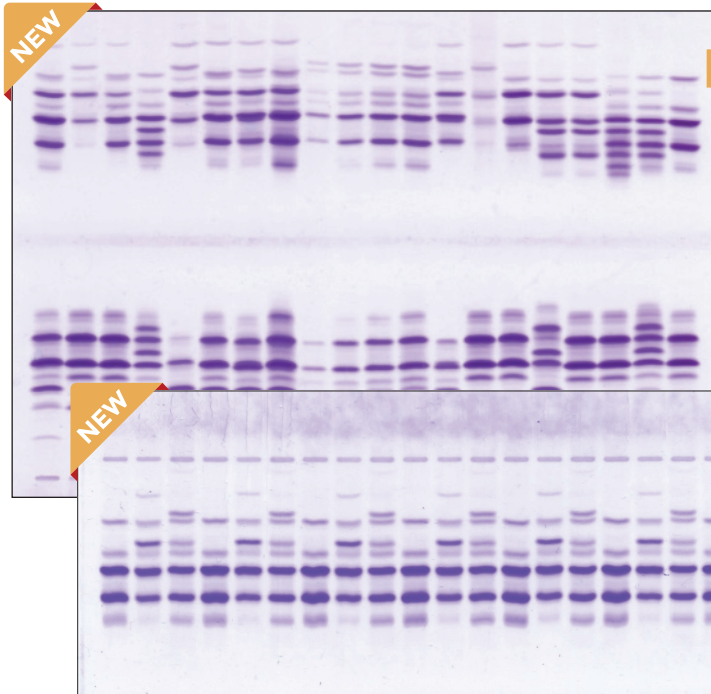
SCAN TO EXPLORE THE SPIFE TOUCH.



JUMP TO DIGITAL



SCAN TO EXPLORE THE A1AT ASSAY.



SPIFE Alpha-1 Antitrypsin

- American Lung Association recommends all individuals with COPD or emphysema be tested for A1AT deficiency
- SPIFE A1AT assay separates up to 20 or 40 samples per gel
- Identifies all phenotypes clinically relevant to lung and liver disease

SPIFE A1AT | 3432 40 sample kit
3433 20 sample kit

Separate 40 samples per SPIFE gel

Identify all clinically relevant phenotypes

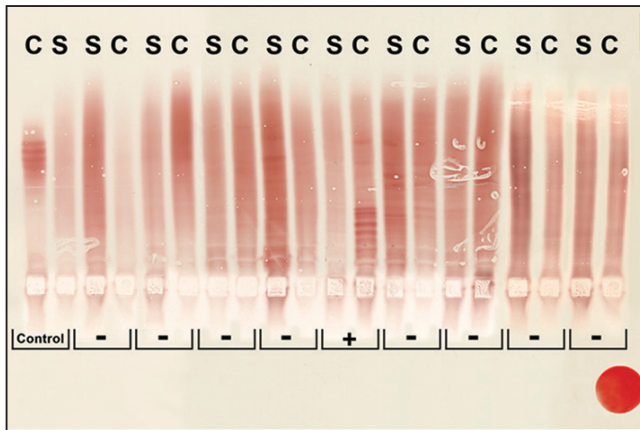
Easy, quick and inexpensive

Excellent sensitivity

JUMP TO DIGITAL



SCAN TO EXPLORE THE IgG IEF ASSAY.



Oligoclonal Banding

SPIFE IgG IEF technique is the "gold standard" for determining intrathecal IgG synthesis. This method uses highly sensitive immunoblotting resulting in a 95% sensitivity level. The concentration of individual bands may be as low as 2% of the total CSF IgG but can be seen even while the total CSF IgG concentration is within the reference range.

IgG IEF | 3389 5 profiles
3385 10 profiles

McDonald Criteria 2017 Revision

Position Paper of the International Panel on Diagnosis of Multiple Sclerosis

- CFS oligoclonal bands (OCB) now considered diagnostic of MS after patient's 1st attack if ≥ 2 MRI lesions present.
- CSF OCB diagnostic after a 2nd clinical attack implicating a different CNS site, even if only 1 MRI lesion present.
- The presence of 2 or more CSF OCB indicates intrathecal antibody synthesis more reliably than other CSF tests.

AJ Thompson, BL Banwell, F Barkhof, et. al., *The Lancet*, December 2017